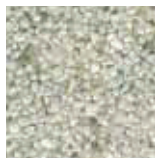


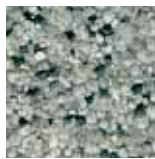


## AltroScreed Quartz EP colour chart



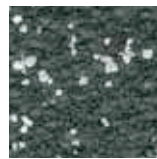
**Jumaana**

LRV 44



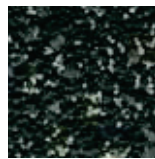
**Opal**

LRV 30



**Kyanite**

LRV 9



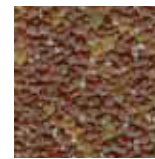
**Onyx**

LRV 8



**Iona**

LRV 5



**Narooma**

LRV 14



**Amber**

LRV 42



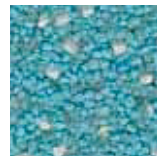
**Pyrite**

LRV 20



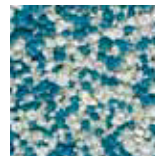
**Giza**

LRV 27



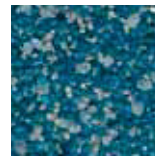
**Turquoise**

LRV 25



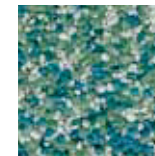
**Ula**

LRV 22



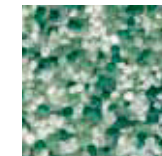
**Lapis**

LRV 11



**Alcazar**

LRV 24



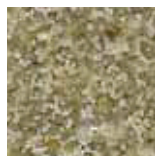
**Yakootah**

LRV 23



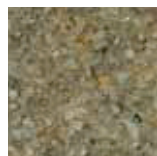
**Rachelle**

LRV 19



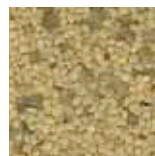
**Greta**

LRV 18



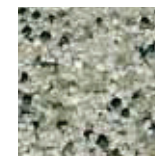
**Peketo**

LRV 12



**Citrine**

LRV 26



**Pearl**

LRV 33

## AltroScreed Quartz Boutique colour chart



**Moonstone**

LRV 59



**Almas**

LRV 47



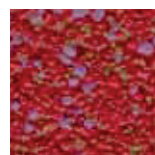
**Chrystal**

LRV 47



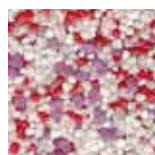
**Selenite**

LRV 19



**Soraya**

LRV 13



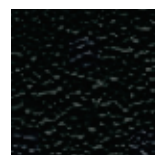
**Cara**

LRV 34



**Jola**

LRV 14



**Tourmaline**

LRV 4

FeRFA (The Resin Association) do not consider anhydrite, hemi-hydrate and calcium-sulphate screeds to be suitable for overlayment with resin floor finishes.

Pale colours may show some cosmetic discolouration on exposure to UV light. Please contact Altro technical services for further information.

Altro resin products provide a tough and practical solution. However, as with most industrial and commercial flooring, in some situations resins may suffer chemical attack or staining. Please contact Altro for further information.

Altro resins are specifically designed for use in industrial and commercial environments and perform well in these areas. However, Altro do not promote resin products for use in domestic applications, on-site support is not available for such installations.

Please consult Altro for all chemical resistance details.

Product information: Tel: +44 1462 707 600 E-mail: [enquiries@altro.com](mailto:enquiries@altro.com)

Codes: **LRV** = Light Reflectance Value

EXPERIENCE HAS SHOWN THAT PRINTING CANNOT REPRODUCE COLOURS ACCURATELY. IF COLOUR CHOICE IS CRITICAL, PLEASE REQUEST A SAMPLE OF THE MATERIAL